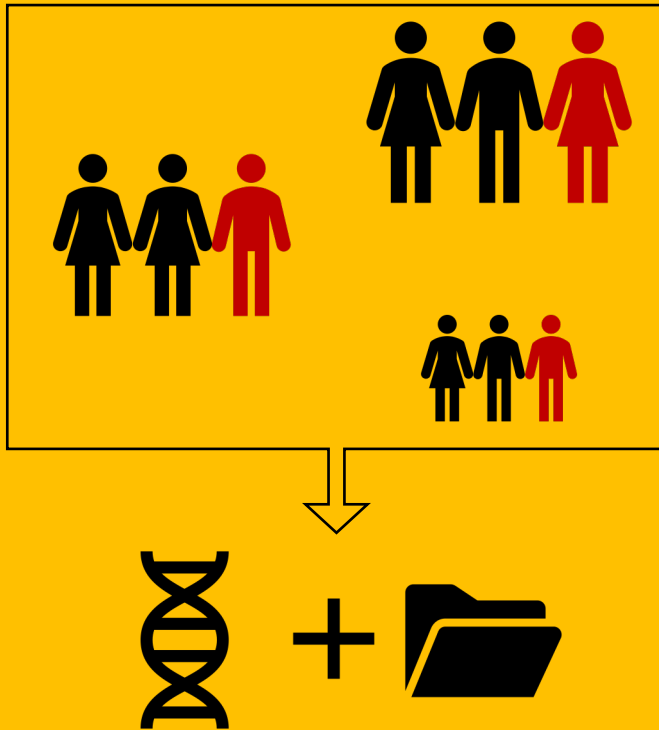


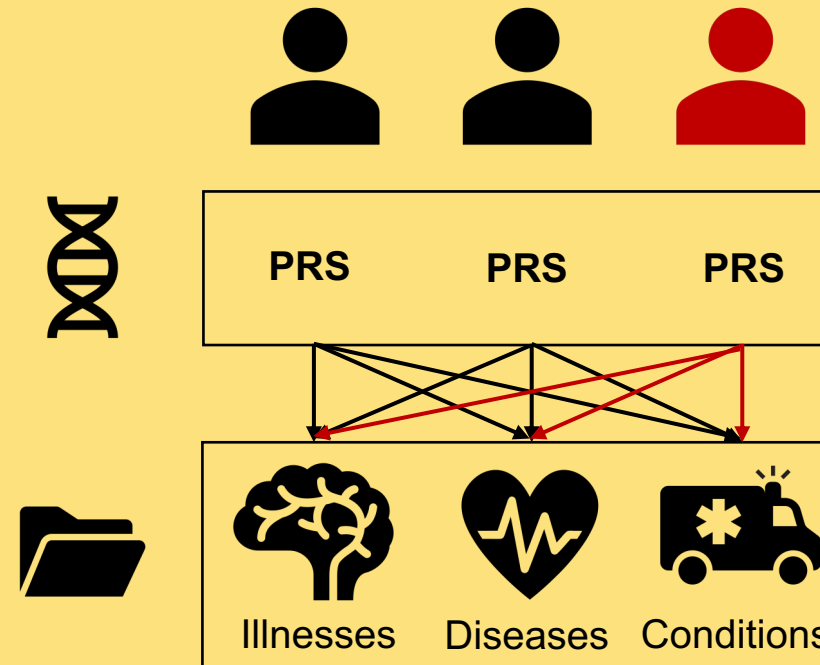
# Exploring various polygenic risk scores for skin cancer in the phenomes of the Michigan Genomics Initiative and the UK Biobank with a visual catalog: *PRSWeb*

## Data



Data from the **Michigan Genomics Initiative** and the **UK Biobank** with genotype and electronic health record data

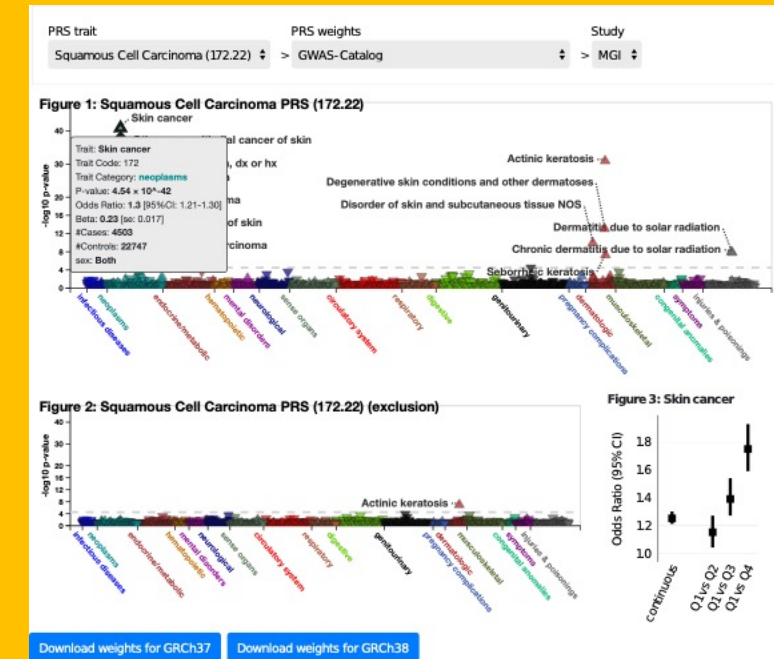
## Analysis



Multiple methods were used to construct **PRS** for the three most common skin cancer subtypes. These scores were tested for their **associations** across the **electronic medical record-derived phenome**.

## Share

### PRSWeb



[statgen.github.io/PRSweb](https://statgen.github.io/PRSweb)

***PRSWeb*** is an **interactive, online resource** to explore different **PRS** constructions and their **associations** with electronic health record-derived **phenotypes**